

For combination with:
DC-Micromotors:
M3138U, MD3626, MD3644

Series MD35C

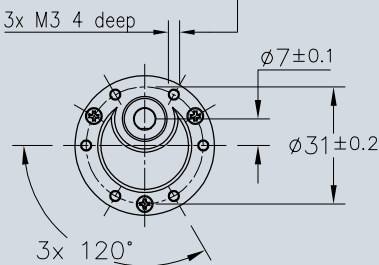
	MD35C
Housing material	zinc die cast
Geartrain material	metal, plastic
Recommended max. input speed for:	
– continuous operation	5,000 rpm
Backlash, at no-load	≤ 3°
Bearings on output shaft	sintered bronze
Shaft load, max.:	
– radial (10 mm from mounting face)	≤ 30 N
– axial	≤ 25 N
Shaft press fit force. max.	≤ 60 N
Shaft play (on bearing output):	
– radial	≤ 0.1 mm
– axial	≤ 0.35 mm
Operating temperature range	– 10 to + 60 °C

Specifications

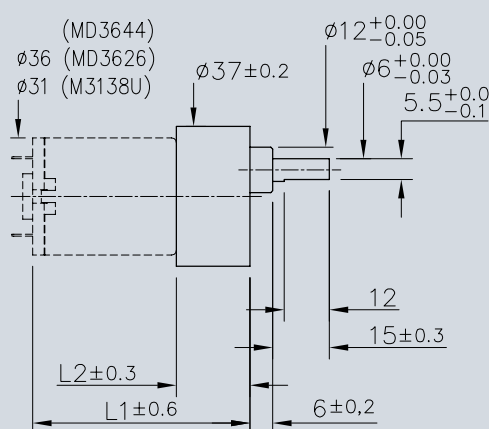
reduction ratio (nominal)	number of gear stages	weight sintered type	length without motor L2	length with motor MD3138 L1	length with motor MD3530 L1	length with motor MD3626 L1	length with motor MD3644 L1	output torque		direction of rotation (reversible)	efficiency
								continuous operation M max. mNm	intermittent operation M max. mNm		
29:1	3	95.4	20.8	58.8	50.8	46.8	64.8	192	576	CCW	73
35:1	4	102.4	23.3	61.3	53.3	49.3	67.3	192	576	CW	66
49:1	4	102.4	23.3	61.3	53.3	49.3	67.3	294	882	CW	66
59:1	4	102.4	23.3	61.3	53.3	49.3	67.3	294	882	CW	66
80:1	4	102.4	23.3	61.3	53.3	49.3	67.3	392	1,176	CW	66
102:1	5	107.5	25.8	63.8	55.8	51.3	69.8	588	1,764	CCW	59
115:1	5	107.5	25.8	63.8	55.8	51.3	69.8	588	1,764	CCW	59
129:1	5	107.5	25.8	63.8	55.8	51.3	69.8	588	1,176	CCW	59
150:1	5	107.5	25.8	63.8	55.8	51.3	69.8	588	1,176	CCW	59
181:1	5	107.5	25.8	63.8	55.8	51.3	69.8	588	1,764	CCW	59
200:1	5	107.5	25.8	63.8	55.8	51.3	69.8	588	1,764	CCW	59
241:1	5	107.5	25.8	63.8	55.8	51.3	69.8	588	1,764	CCW	59
302:1	6	114.6	28.3	66.3	58.3	54.3	72.3	588	1,764	CW	53
494:1	6	114.6	28.3	66.3	58.3	54.3	72.3	588	1,764	CW	53
684:1	6	114.6	28.3	66.3	58.3	54.3	72.3	588	1,764	CW	53

weight includes washer, pinion and screws

Orientation with respect to motor terminals not defined



Front View



MD35C

