

# Support of Third Party BLDC motors

## Summary

---

Overview of supported / required characteristics of third party BLDC motors.

Step by step instruction of setting up:

- a **third party** BLDC motor with **digital hall** sensors (+ incremental encoder)
- to operate with a MC3 Motion Controller
- using Motion Manager 6.3

## Applies To

Faulhaber Motion Controller MC5004, MC5005 and MC5010

## Description: Specification of third party BLDC motor / controller combination

<b>Supply voltage</b>	up to 50	V
<b>Electrical time constant L / R</b>	up to 2.5	ms
<b># of pole pairs</b>	up to 12 (= 24 poles)	
<b>Torque constant</b>	up to 200	mNm / A
<b>Commutation sources</b>	Digital hall sensors (+ incremental encoder): <ul style="list-style-type: none"> <li>• Block commutation or</li> <li>• Sinusoidal commutation in combination with incremental encoder, only</li> </ul>	
<b>Actual Sources of Velocity and Position</b>	<ul style="list-style-type: none"> <li>• Digital hall sensors (not as position source)</li> <li>• Incremental encoder (recommended as position and velocity source)</li> <li>• for absolute encoder, see also AppNote 158</li> </ul>	
<b>Total inertia <math>J_{\text{Motor}} + J_{\text{Load}}</math>  (<math>J_{\text{Load}}</math> reduced to motor-side)</b>	<ul style="list-style-type: none"> <li>• up to approx. 4000 = 0.0004</li> <li>• with <math>kJ = ((J_{\text{Motor}} + J_{\text{Load}}) / J_{\text{Motor}})</math> ideally <math>\leq 4</math></li> </ul>	gcm <sup>2</sup> kgm <sup>2</sup>
<b>Hall sensor phasing</b>	120	°
<b>Alignment of hall sensors with EMF</b>	<ul style="list-style-type: none"> <li>• Supported: <ul style="list-style-type: none"> <li>- Hall sensors / EMF shifted by 60° (default)</li> <li>- Hall sensors / EMF shifted by 240° (inverted)</li> </ul> </li> <li>• Other alignments in combination with sinusoidal commutation, only. (Adjustment of phase angle offset parameter required, which is not explained here)</li> </ul>	
<b>Commutation Sequence</b>	<ul style="list-style-type: none"> <li>• Supported sequences for clockwise rotation: <ul style="list-style-type: none"> <li>- C-B-A (default)</li> <li>- A-B-C</li> </ul> </li> </ul>	
<b>Lead labels</b>	<ul style="list-style-type: none"> <li>• usually: A = U = 1   B = V = 2   C = W = 3</li> </ul>	

## Step by Step instruction

1. **Carefully compare the motor datasheet** with the specification on page 2 and the following tables and diagrams to identify if your third party motor is supported and which use case applies. Contact your motor supplier if the datasheet does not provide any comparable information.

### Excitation sequences and hall sensor output tables of major use cases for clockwise (cw) rotation:

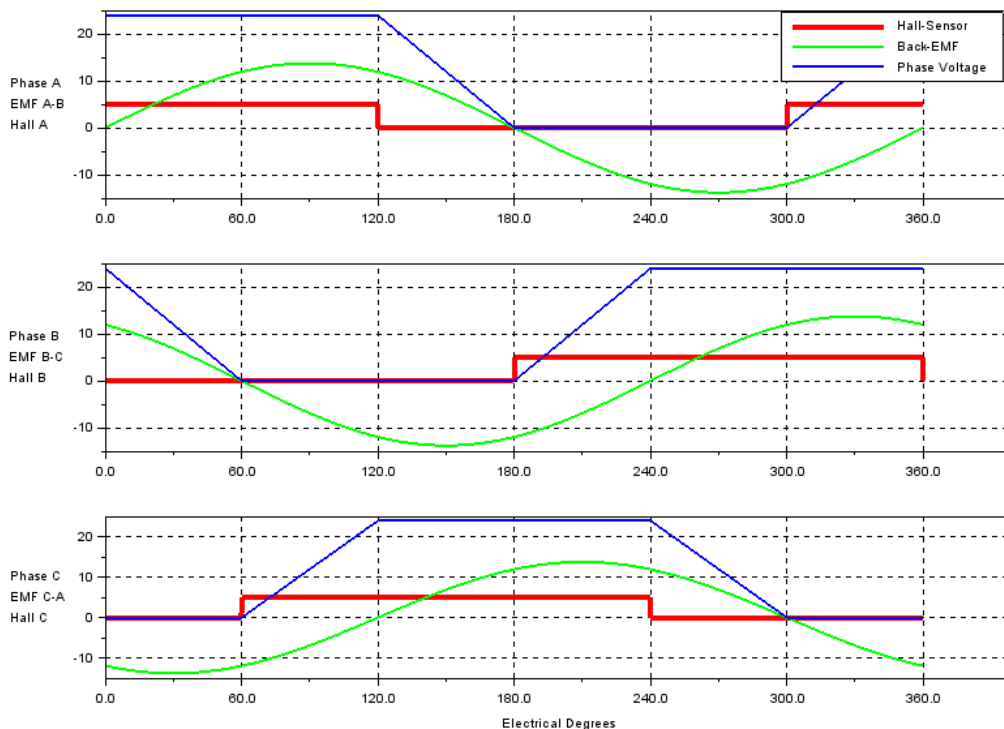
(1) Default settings for FAULHABER motors

Commutation Sequence: **C-B-A**

Alignment of hall sensors with EMF - **shifted by +60°**

Electrical Degrees	Sensors			Phases		
	A	B	C	A	B	C
0 - 60°	1	0	0	High	x	Low
60 - 120°	1	0	1	High	Low	x
120 - 180°	0	0	1	x	Low	High
180 - 240°	0	1	1	Low	x	High
240 - 300°	0	1	0	Low	High	x
300 - 360°	1	1	0	x	High	Low

Hall sensor outputs and excitation sequence



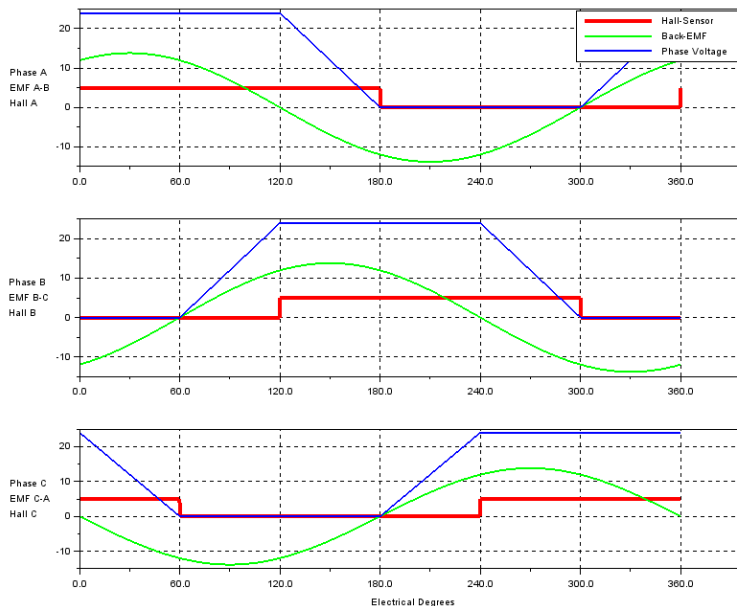
Phase-Voltages, Back-EMF and Hall-Sensor-Signals

## (2) Commutation Sequence A-B-C

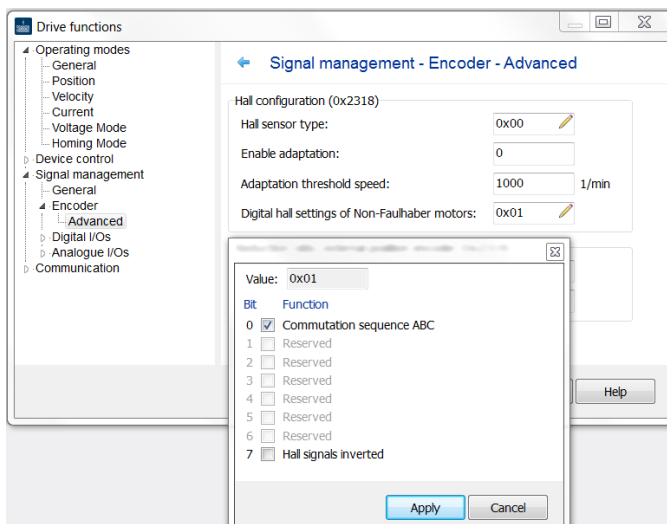
Alignment of hall sensors with EMF - shifted by  $-60^\circ$

Electrical Degrees	Sensors			Phases		
	A	B	C	A	B	C
0 - 60°	1	0	1	High	Low	x
60 - 120°	1	0	0	High	x	Low
120 - 180°	1	1	0	x	High	Low
180 - 240°	0	1	0	Low	High	x
240 - 300°	0	1	1	Low	x	High
300 - 360°	0	0	1	x	Low	High

Hall sensor outputs and excitation sequence



Phase-Voltages, Back-EMF and Hall-Sensor-Signals



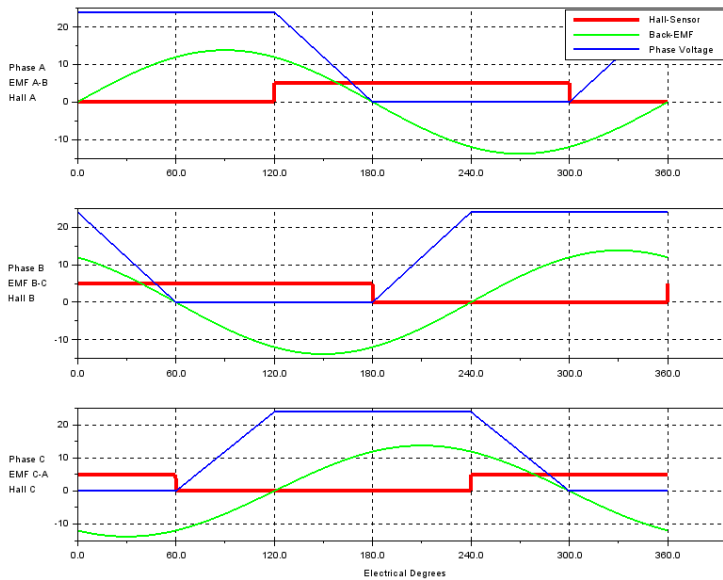
Motion Manager Settings

### (3) Commutation Sequence C-B-A

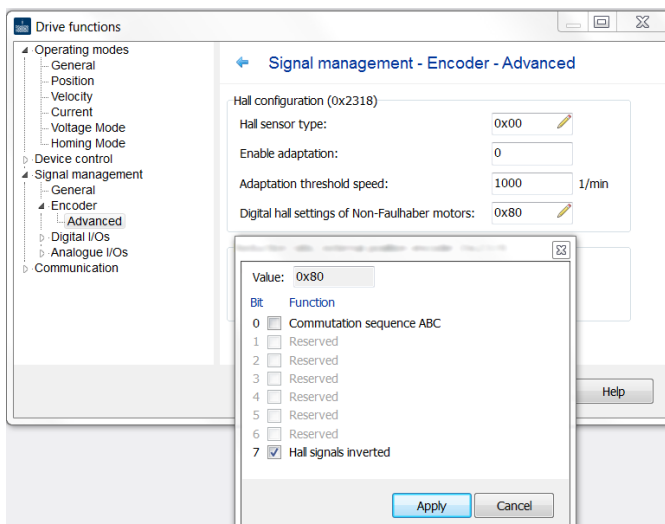
Alignment of hall sensors with EMF - **shifted by +240°** (= **inverted** to use case 1)

Electrical Degrees	Sensors			Phases		
	A	B	C	A	B	C
0 - 60°	0	1	1	High	x	Low
60 - 120°	0	1	0	High	Low	x
120 - 180°	1	1	0	x	Low	High
180 - 240°	1	0	0	Low	x	High
240 - 300°	1	0	1	Low	High	x
300 - 360°	0	0	1	x	High	Low

Hall sensor outputs and excitation sequence



Phase-Voltages, Back-EMF and Hall-Sensor-Signals



Motion Manager Settings

2. **Connect the motor phases and sensor wires.**

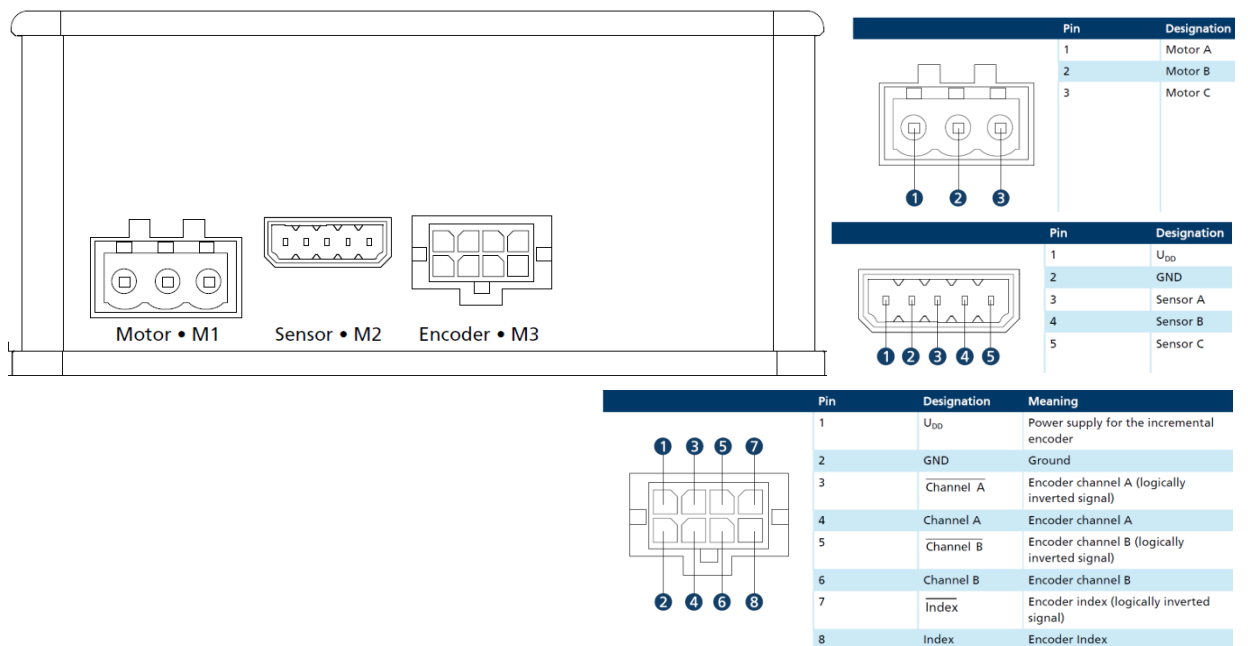
Faulhaber Controllers use the labels A, B and C.

Usually this can be directly transferred to:

Controller	Phases			Hall Sensors		
	Mot-A	Mot-B	Mot-C	Sens-A	Sens-B	Sens-C
Motor	Phase_U	Phase_V	Phase_W	Hall_U	Hall_V	Hall_W
or Motor	Phase_1	Phase_2	Phase_3	Hall_1	Hall_2	Hall_3

- Some motors offer positive and negative digital hall sensor signals. Connect the positive ones to the controller, the negative ones are not used.
- It is likely that the motor will have an additional incremental encoder. Connect it to the Encoder input M3, making sure that Channel\_A and Channel\_B are not mixed up. (Using an encoder index or a line driver is optional.)

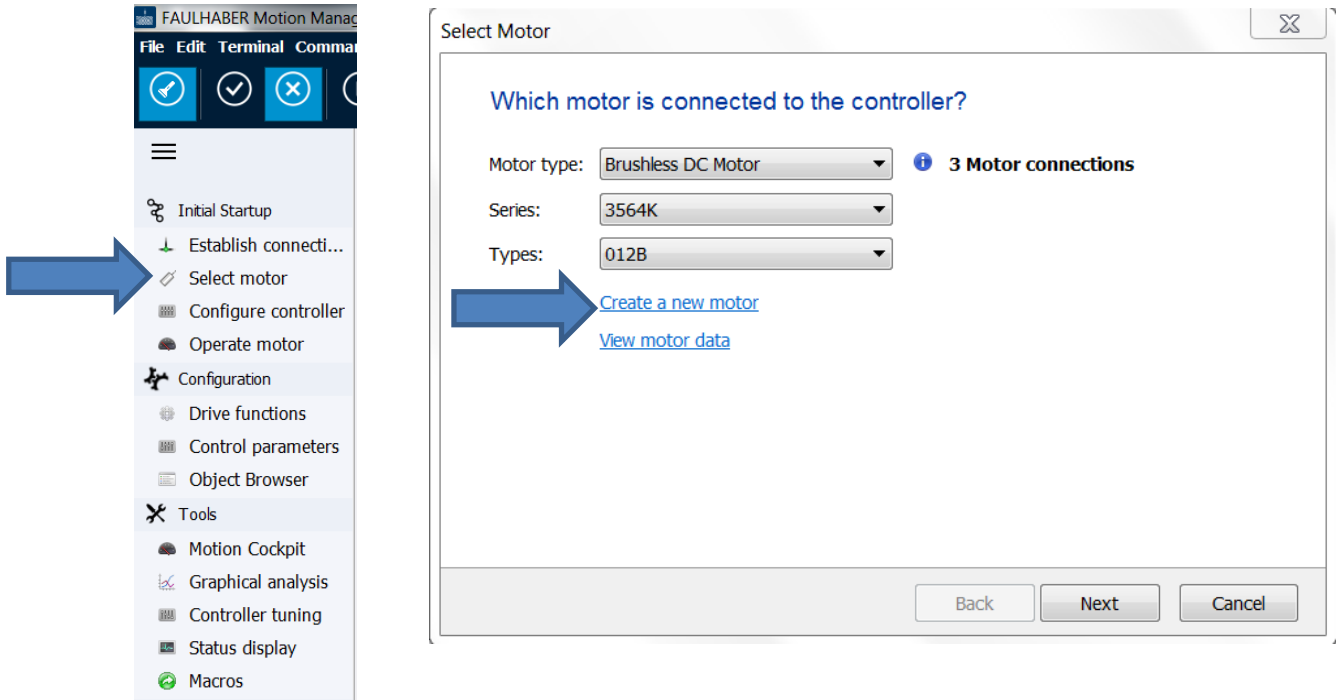
Naming of the controller connectors (MC5005 + MC5010)



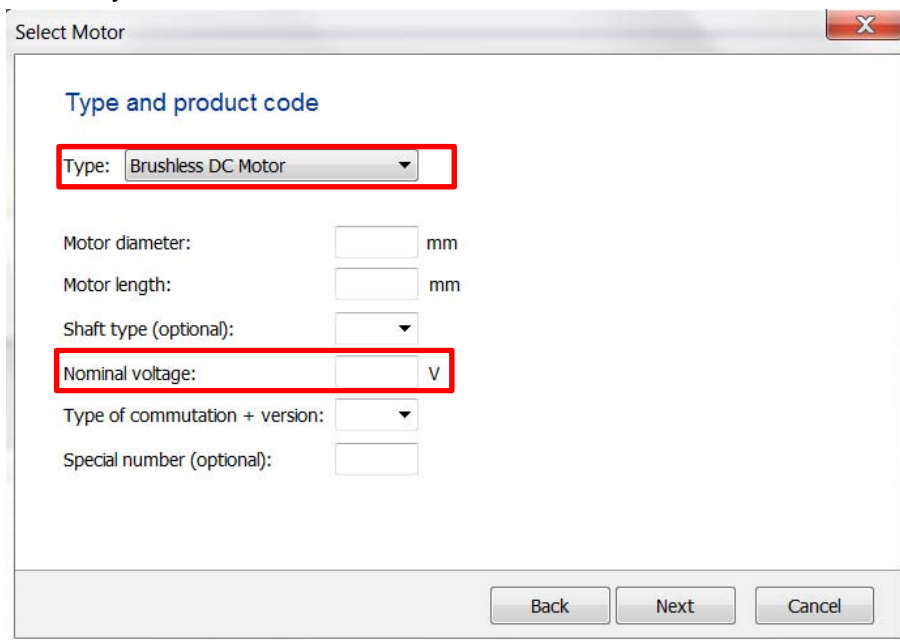
3. **Connect the power supply** to the controller (Up and Umot)

and establish communication

4. Create a **new motor** using the motor select wizard of Motion Manager 6.3



When creating the motor make sure that especially the red marked parameters are correctly entered.



Select Motor ✕

Data sheet values 0101 012B

Designation	Unit	Value
Terminal resistance (R)	Ohm	
Friction torque, static (Co)	mNm	
Friction torque, dynamic (Cv)	mNm/rpm	
Torque constant (kM)	mNm/A	
Terminal inductance (L)	µH	
Rotor inertia (J)	gcm <sup>2</sup>	
Thermal resistance (Rth1)	K/W	
Thermal resistance (Rth2)	K/W	
Thermal time constant (Tw1)	s	
Thermal time constant (Tw2)	s	
Number of pole pairs	-	
Rated current (thermal limit) (IN)	A	

*(Note: In the original image, several rows in this table are highlighted with red boxes.)*

*i* Double-click for entry

If the values for friction and thermal parameters are not available, choose the values of a similar Faulhaber motor instead (of course the thermal motor model will not be precise in this case). Then click save.

5. **Choose** the newly created **motor** by clicking next.
6. **Configure the sensors**, following the “select motor wizard”  
 Choose Digital Hall sensors as Sensor input. If present enter an Incremental Encoder as encoder input, as well as the number of Pulses/Rev. (The value entered here will be internally multiplied by 4 to reflect the 4-edge evaluation of the controller).

Select Motor ✕

Which encoder systems are connected to the controller?

**Port**                      **Encoder system**

Sensor input:           

Encoder input:                      

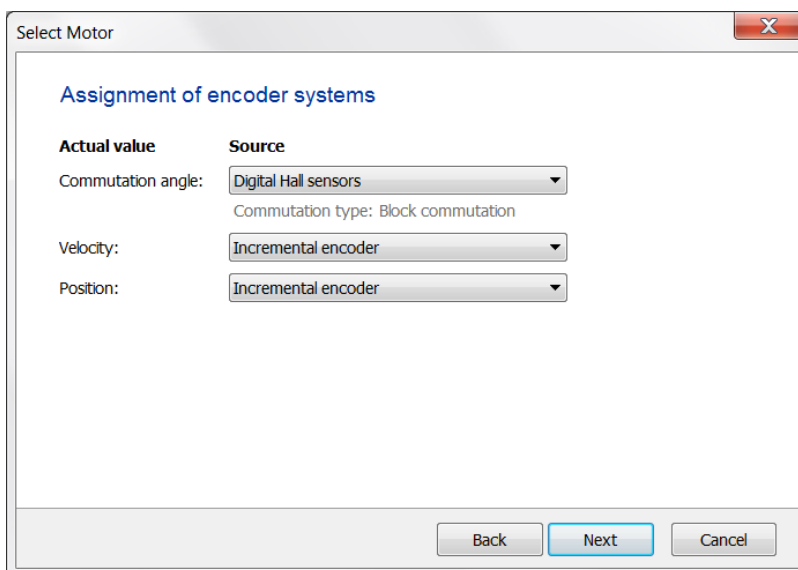
Advanced

Use I/O port as input for encoder system



7. **Choose block commutation** by assigning digital hall sensors for commutation. If present select an incremental encoder as source for velocity and position.

Even if **sinusoidal commutation** shall be used in the application it is highly recommended to first select block commutation. Then follow the steps 8..11 for configuration and verification, and only afterwards come back to the “motor selection wizard” and choose sinusoidal commutation by assigning “digital hall sensors + incremental encoder” to the commutation angle. (Otherwise verification of the correct settings gets difficult).

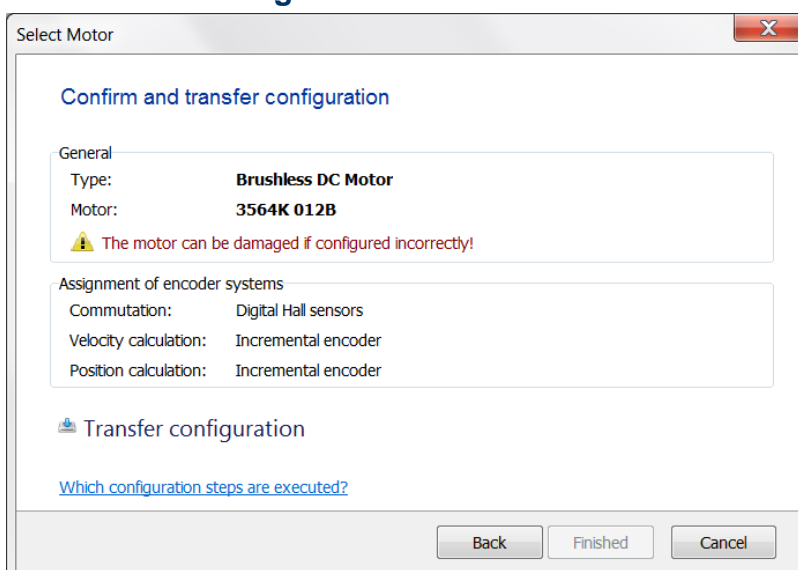


The screenshot shows a dialog box titled "Select Motor" with a close button (X) in the top right corner. The main heading is "Assignment of encoder systems". Below this, there are three rows of configuration options:

Actual value	Source
Commutation angle:	Digital Hall sensors (dropdown menu) <small>Commutation type: Block commutation</small>
Velocity:	Incremental encoder (dropdown menu)
Position:	Incremental encoder (dropdown menu)

At the bottom of the dialog box, there are three buttons: "Back", "Next" (highlighted in blue), and "Cancel".

8. **Transfer the configuration** to the controller and save it.



The screenshot shows the same "Select Motor" dialog box, now at the "Confirm and transfer configuration" step. The main heading is "Confirm and transfer configuration".

Under the "General" section, the following information is displayed:

- Type: **Brushless DC Motor**
- Motor: **3564K 012B**
- ⚠ The motor can be damaged if configured incorrectly!**

Under the "Assignment of encoder systems" section, the following information is displayed:

- Commutation: Digital Hall sensors
- Velocity calculation: Incremental encoder
- Position calculation: Incremental encoder

Below this, there is a "Transfer configuration" button with a download icon. A link "Which configuration steps are executed?" is also present.

At the bottom of the dialog box, there are three buttons: "Back", "Finished" (highlighted in blue), and "Cancel".

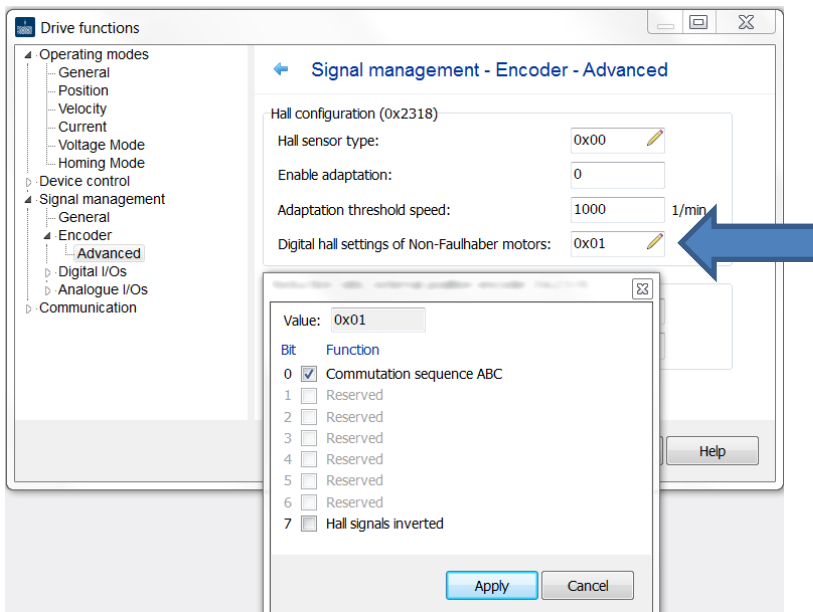
If the configuration cannot be transferred, contact your FAULHABER sales partner and provide the data which was entered during motor creation, so FAULHABER can check for compatibility with the controller.

9. **Recall the use case** which was identified in step 1 on by examining the tables and diagrams.

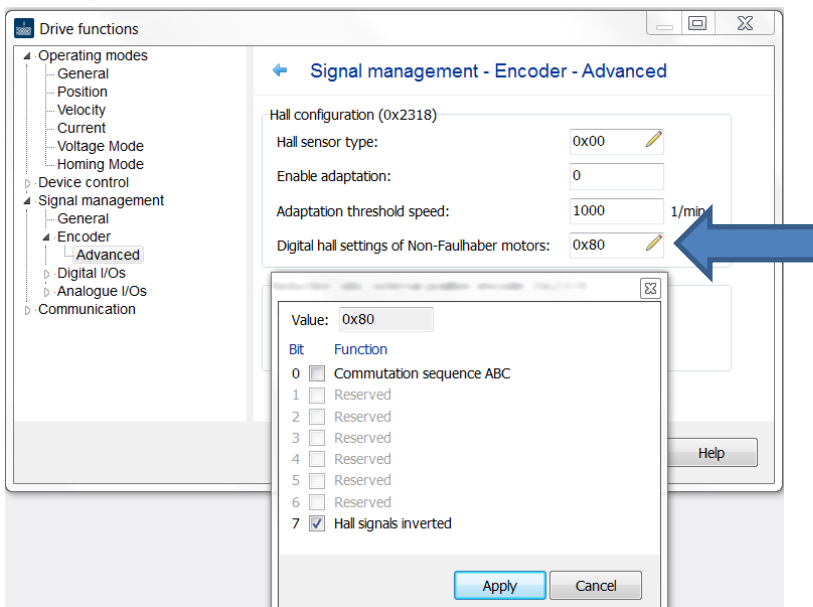
If **use case 2 (commutation sequence A-B-C)** or **3 (inverted hall signals)** applies to the motor the hall configuration 2318.04 has to be modified accordingly.

Go to Configuration / Drive functions / Signal management / Encoder / Advanced:

Configuration of use case 2:

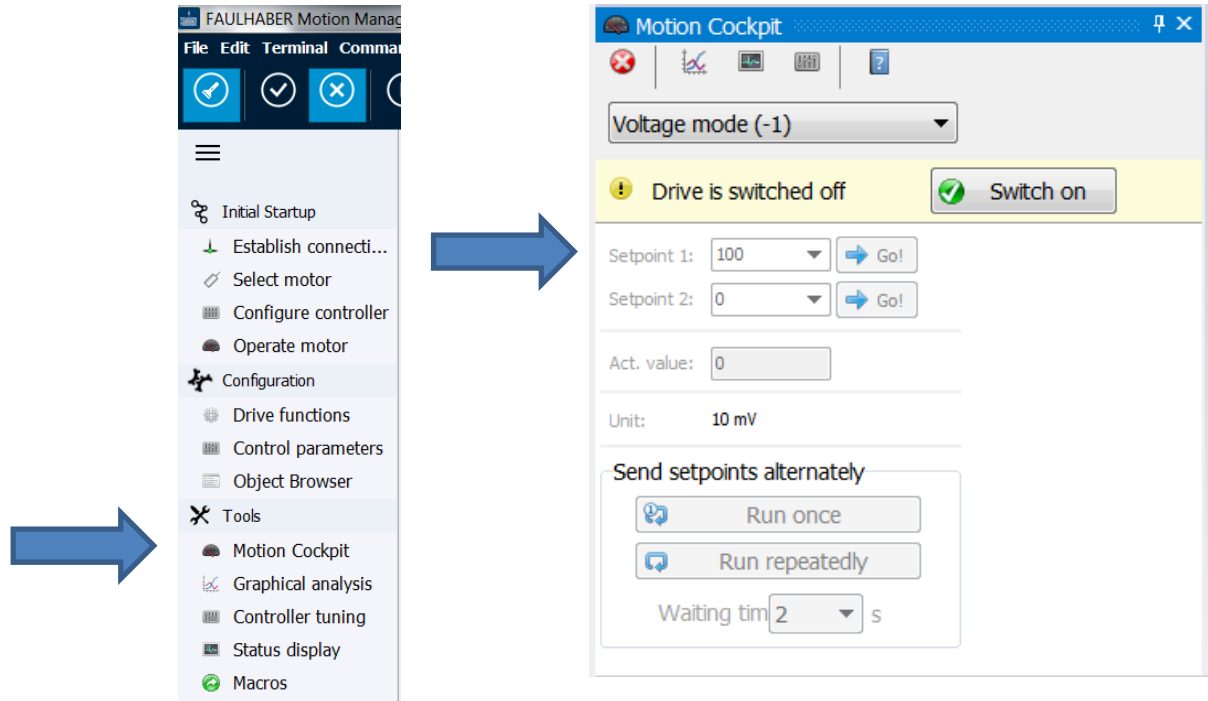


Configuration of use case 3:



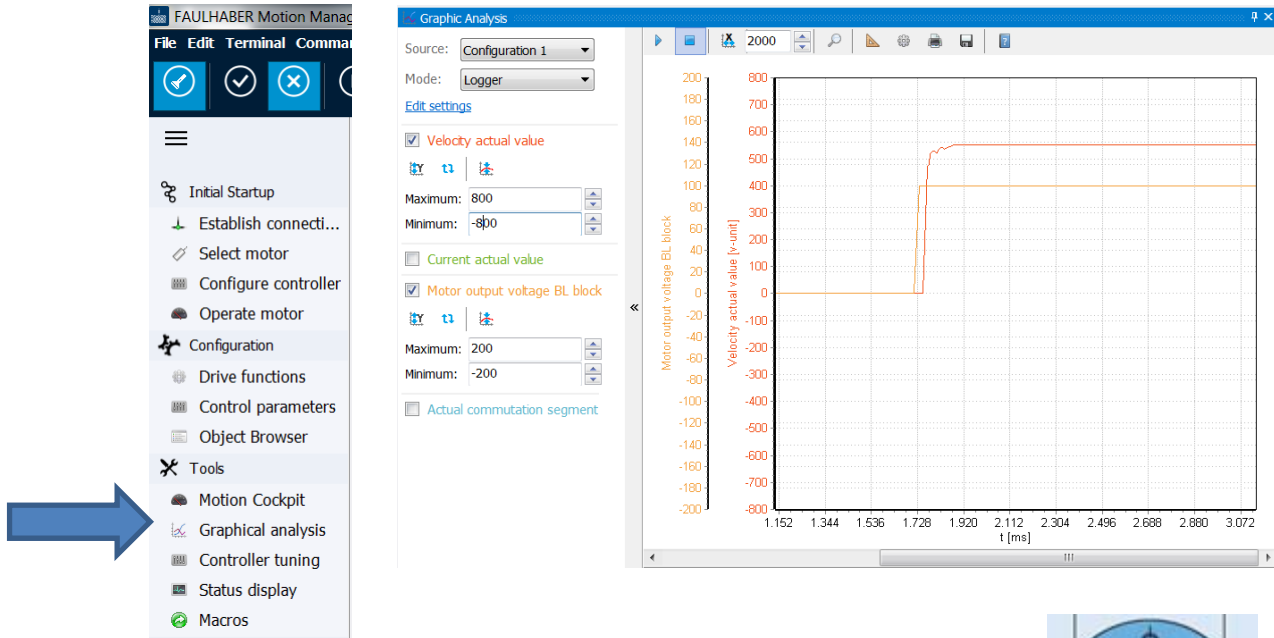
If use case 1 applies the value of object 2318.04 must be 0x00.

## 10. Testing the configuration - in voltage mode, via graphical analysis



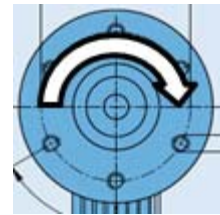
- Open the Motion Cockpit
- Choose the voltage mode and switch the power stage on.
- Command a voltage of 1 V by tipping 100 into the “Setpoint 1” field.
- Then push the Motion Cockpit button “Go!”

- Open the Graphical Analysis and add the sources “Velocity actual value”, “Motor output voltage BL block”, “Current actual value” and “Actual commutation segment” (via Edit settings).



A correctly configured motor will:

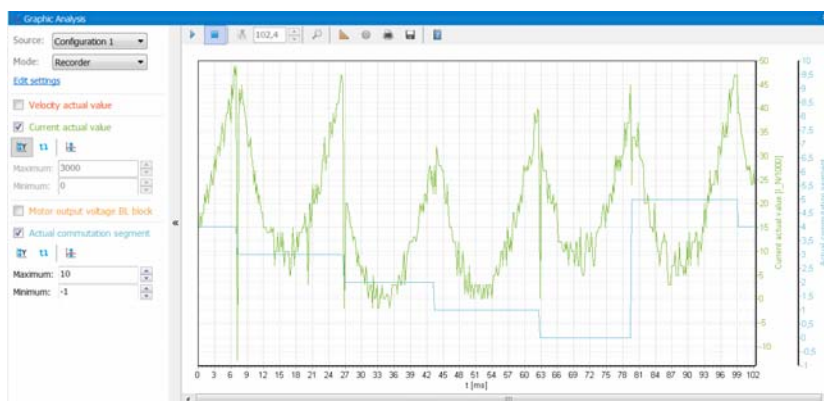
- run clockwise (when looking onto the shaft) ✓
- show a positive Velocity actual value as displayed in the above graph ✓



**For block commutation only:**

- show the typical current waveform with commutation “arcs” ✓
- show no current spikes, expect for spikes towards zero at the point of commutation. ✓

Recorder view of a reasonable Torque actual value + Commutation segments:



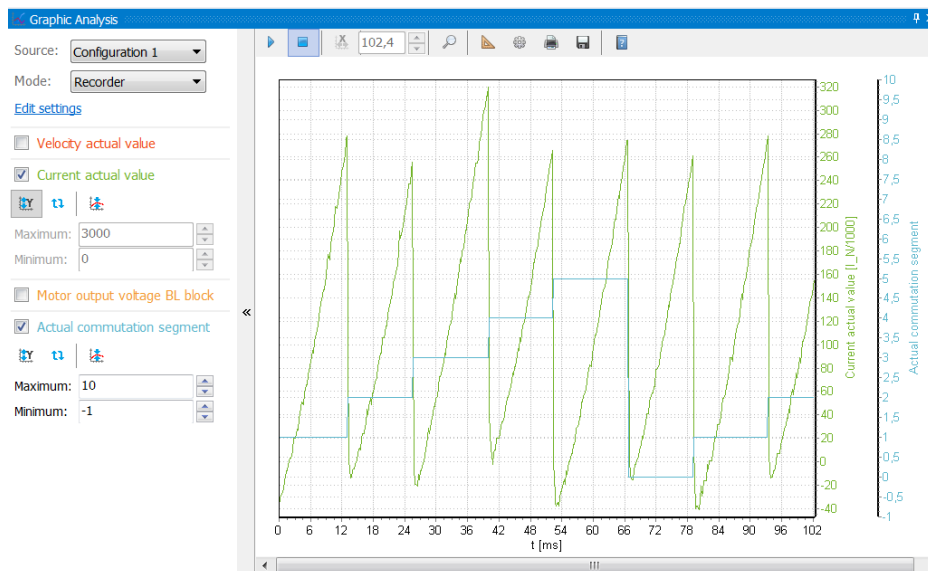
## 11. Troubleshooting

- The Velocity actual value is negative, when commanding a positive voltage
  - if an incremental encoder is used, swap the encoder channels A and B
  - if only digital hall sensors are used, it is likely that the hall sensor configuration is incorrect, see step 9, page 10.
- The motor is not running at all or not running smoothly
  - Check if the number of pole pairs (object 0x2329.07) was entered correctly (see object browser, or select motor → edit motor data)
  - Check if the correct hall sensor configuration was chosen (object 2318.04), see step 9, page 10.
  - Check the wiring, see step 2, page 6

### For block commutation, only:

- The recorded graph of the torque actual value does not show the typical commutation waveform (see page 12)

Example of an incorrect current waveform:



- Check if the correct hall sensor configuration was chosen (object 2318.04), see step 9, page 10.
- Check the wiring, see step 2, page 6

- The recorded graph of the torque actual value shows spikes which are not related to the point of commutation (= when a commutation segment changes)
  - Check if the correct hall sensor configuration was chosen (object 2318.04), see step 9, page 10.
  - Check the wiring, see step 2, page 6

## **12. Further Steps for starting up the system**

Proceed with the controller configuration wizard.

There the parameters of the feedback control system will be set according to the inertia of the system. In order to identify the inertia, the complete system including the load must be available.

Be aware that the automatic system identification was designed for slotless motors; it might not work with some slotted motors.

## Rechtliche Hinweise

**Urheberrechte.** Alle Rechte vorbehalten. Ohne vorherige ausdrückliche schriftliche Genehmigung der Dr. Fritz Faulhaber & Co. KG darf insbesondere kein Teil dieser Application Note vervielfältigt, reproduziert, in einem Informationssystem gespeichert oder be- oder verarbeitet werden.

**Gewerbliche Schutzrechte.** Mit der Veröffentlichung der Application Note werden weder ausdrücklich noch konkludent Rechte an gewerblichen Schutzrechten, die mittelbar oder unmittelbar den beschriebenen Anwendungen und Funktionen der Application Note zugrunde liegen, übertragen noch Nutzungsrechte daran eingeräumt.

**Kein Vertragsbestandteil; Unverbindlichkeit der Application Note.** Die Application Note ist nicht Vertragsbestandteil von Verträgen, die die Dr. Fritz Faulhaber GmbH & Co. KG abschließt, soweit sich aus solchen Verträgen nicht etwas anderes ergibt. Die Application Note beschreibt unverbindlich ein mögliches Anwendungsbeispiel. Die Dr. Fritz Faulhaber GmbH & Co. KG übernimmt insbesondere keine Garantie dafür und steht insbesondere nicht dafür ein, dass die in der Application Note illustrierten Abläufe und Funktionen stets wie beschrieben aus- und durchgeführt werden können und dass die in der Application Note beschriebenen Abläufe und Funktionen in anderen Zusammenhängen und Umgebungen ohne zusätzliche Tests oder Modifikationen mit demselben Ergebnis umgesetzt werden können.

**Keine Haftung.** Die Dr. Fritz Faulhaber GmbH & Co. KG weist darauf hin, dass aufgrund der Unverbindlichkeit der Application Note keine Haftung für Schäden übernommen wird, die auf die Application Note zurückgehen.

**Änderungen der Application Note.** Änderungen der Application Note sind vorbehalten. Die jeweils aktuelle Version dieser Application Note erhalten Sie von Dr. Fritz Faulhaber GmbH & Co. KG unter der Telefonnummer +49 7031 638 688 oder per Mail von [mcsupport@faulhaber.de](mailto:mcsupport@faulhaber.de).

## Legal notices

**Copyrights.** All rights reserved. No part of this Application Note may be copied, reproduced, saved in an information system, altered or processed in any way without the express prior written consent of Dr. Fritz Faulhaber & Co. KG.

**Industrial property rights.** In publishing the Application Note Dr. Fritz Faulhaber & Co. KG does not expressly or implicitly grant any rights in industrial property rights on which the applications and functions of the Application Note described are directly or indirectly based nor does it transfer rights of use in such industrial property rights.

**No part of contract; non-binding character of the Application Note.** Unless otherwise stated the Application Note is not a constituent part of contracts concluded by Dr. Fritz Faulhaber & Co. KG. The Application Note is a non-binding description of a possible application. In particular Dr. Fritz Faulhaber & Co. KG does not guarantee and makes no representation that the processes and functions illustrated in the Application Note can always be executed and implemented as described and that they can be used in other contexts and environments with the same result without additional tests or modifications.

**No liability.** Owing to the non-binding character of the Application Note Dr. Fritz Faulhaber & Co. KG will not accept any liability for losses arising in connection with it.

**Amendments to the Application Note.** Dr. Fritz Faulhaber & Co. KG reserves the right to amend Application Notes. The current version of this Application Note may be obtained from Dr. Fritz Faulhaber & Co. KG by calling +49 7031 638 688 or sending an e-mail to [mcsupport@faulhaber.de](mailto:mcsupport@faulhaber.de).